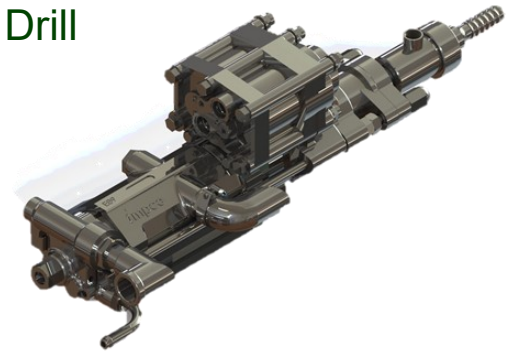




S36IR Independent Rotation Rock Drill

The S36IR, is a powerful 114mm diameter bore rock drill with independently controlled rotation. Particular attention has been paid to the internal layout of the drill to enable excellent life to be obtained from the drill components in heavy duty and arduous applications. The S36 IR provides exceptional performance through fast penetration rates, high durability, and efficient air consumption. The design is based on a proven, durable design that has been updated to include premium materials designed and manufactured to exacting tolerances.



Lubrication

Atomised oil is admitted to the machine from a lubricator fitted to the incoming air line. Positive lubrication of all internal parts is ensured with particular attention paid to the heavily loaded front end components.

Builds

A variety of build options is available to suit varied application requirements. The machine is equipped for remote control operation only. 11mm (7/16) diameter for wet drilling and 14mm (9/16) diameter for wet or dry

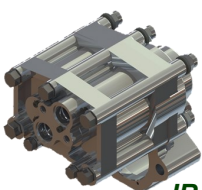
Technical Information

	Metric	Imperial
Stroke	86 mm	3.39 Inch
Bore	114 mm	4.49 Inch
Length (without Shank)	828 mm	33 Inch
Mass	120Kg	265 lb
Blows Per Minute	1630 @ 5 Bar	1630 @ 72.52 psi
Rotation Motor	4.0 Kw @ 120 RPM—5 bar	236 ft lbs @ 73 psi
Nominal Diameter	35 - 89 mm	1.38 - 3.5 inch
Reamed Diameter	up to 127 mm	up to 5 in
Drilling Dept Capacity	up to 46 m	up to 150 ft
Air Consumption	212 L/sec @ 7 bar	450 cfm @ 100 psi
Water Requirements	37 L/min @ 5 bar max.	10 gpm @ 70 psi max.
Air Connection -Hammer	40 mm	1.5 in
Air Connection -Rotation	25 mm	1.0 in
Water Connection -	20 mm	0.75 in
Water Requirements	37 L/min @ 5 bar max.	10 gpm @ 70 psi max
Shank Size	Male 44 mm Four Spline Shank R32,R38,T38 and T45	

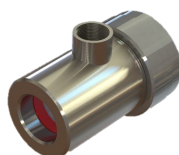
Sub Assemblies are available for trouble free Maintenance

Ordering Numbers

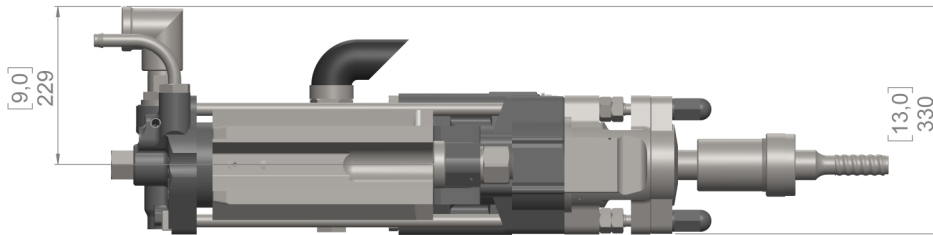
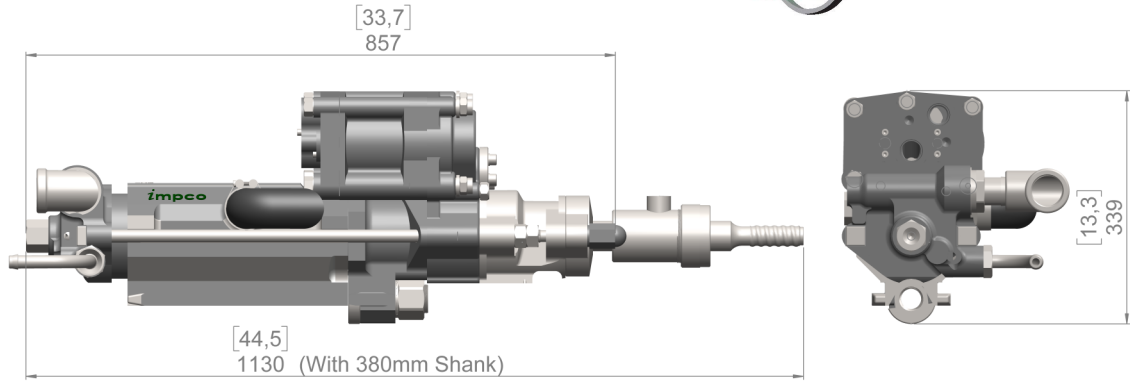
<i>Ma-S36IR-11mm</i>	<i>11mm IR Drill</i>
<i>Ma-S36IR-14mm</i>	<i>14mm IR Drill</i>
<i>SA-S36IR-Rotmo</i>	<i>Complete Gearbox</i>
<i>WBOX-19-034</i>	<i>44 mm Water box</i>



IR Gearbox



Water box for external flushing



Impco Engineering carries a full range of parts for the S36 IR drill in stock. All parts made in South Africa in Our factory based in Rosslyn, Pretoria North to precise specifications using only the highest quality tool steel



The Impco S36-IR drill is available mounted on Aluminium Feed assemblies for 0.8m to 1.8m Drill steel . The assembly is completed with a Impco Centralizer , Remote Control Panel and lubricator

Notes
