



MKV Long Hole Feed Assembly

Impco Engineering designs, manufactures, and supplies its own complete OEM pneumatic feed systems for underground applications. Feed systems are available in various configurations to suit up to 1.8m (6 ft) drill rods



The feed assembly is constructed of a heavy duty aluminium extrusion. Feed components are made from tool steel and lightweight aluminium materials to keep costs and weight down.

Lubrication

Atomised oil is admitted to the Feed from a lubricator fitted to the incoming air line. Positive lubrication of all internal parts is ensured with particular attention paid to the heavily loaded front end components.

Builds

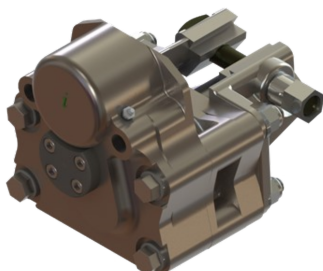
A variety of build options is available to suit varied application requirements. Precision machined Aircraft Aluminium ensure durability and is light-weight Options are available for either single, double or Triple gearbox configurations to optimise torque in the hole. Feed systems available from 3 ft to 14 ft

Technical Information

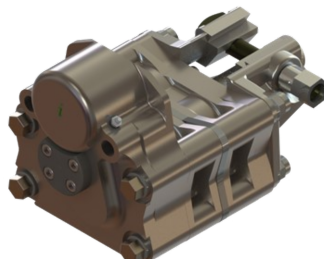
| | Metric | Imperial |
|-----------------------------|-------------------------|-------------------|
| MK5-FS-2M-Tanmo | 2.0m Max Drill Rod Size | 6.15ft |
| MK5-FS-1.5M Tanmo | 1.8m Max Drill Rod Size | 5.90 ft |
| MK5-FS-4'-NC –Tanmo | 1.2m Max Drill Rod Size | 4.00 ft |
| MK5-FS-1M-RC Standmo | 1.0m Max Drill Rod Size | 3.20 ft |
| MK5-FS-2M-Tanmo | Max Drill Rod 2.0m | 6.15 ft |
| MK5-FS-1.5M Tanmo | Max Drill Rod 1.80m | 5.90 ft |
| MK5-FS-4'-NC –Tanmo | Max Drill Rod 1.2m | 4.00 ft |
| MK5-FS-1M-RC Standmo | Max Drill Rod 1.0m | 3.20 ft |
| Air Consumption | 212 L/sec @ 7 bar | 450 cfm @ 100 psi |
| Air Connection -Rotation | 25 mm | 1.0 in |

Gearboxes available

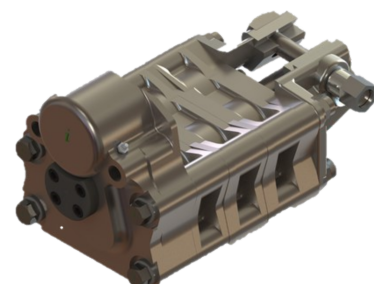
Standmo (Single)



Tanmo (Double)



Trimmo (triple)

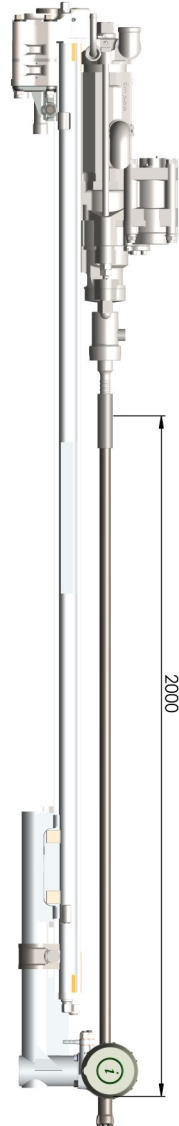




Part Number: MK5-FS-2M-TANMO
Feed Length OAL: E95-2M - 2790 mm (9.15 ft)
Feed Screw Length OAL: B2468-2m - 2840 mm (9.13 ft)
Gearbox : Tanno (Double Stage)

Maximum Recommended Drill Rod length 2m (6.15 ft)

2000

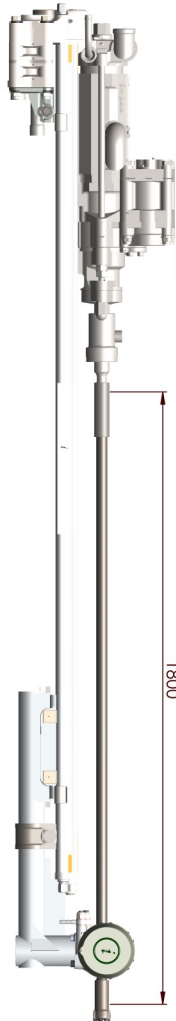


Drill Feed Assemblies Sizes

Part Number: MK5-FS-1.5M-TANMO
Feed Length OAL: E2809 - 2433 mm (8 ft)
Feed Screw Length OAL: B6883 - 2483 mm (8.14 ft)
Gearbox : Tanno (Double Stage)

Maximum Recommended Drill Rod length 1.8m (5.9 ft)

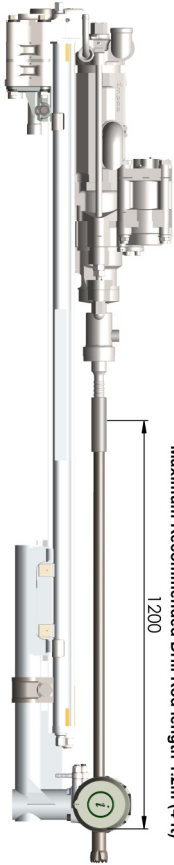
1800



Part Number: MK5-FS-4-NCTANMO
Feed Length OAL: E546 - 2006 mm (6.58 ft)
Feed Screw Length OAL: B2602 - 2058 mm (6.75 ft)
Gearbox : Tanno (Double Stage)

Maximum Recommended Drill Rod length 1.2m (4 ft)

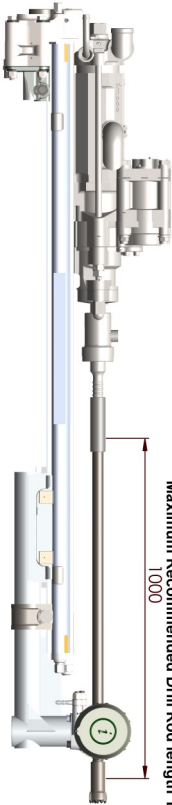
1200



Part Number: MK5-FS-1M-RC
Feed Length OAL: E141-1M - 1790 mm (5.8 ft)
Feed Screw Length OAL: B2469-1M - 1838 mm (6.03 ft)
Gearbox : Stanno (Single Stage)

Maximum Recommended Drill Rod length 1.0m (3.2 ft)

1000



All Feed Assemblies –Remote Controlled

Impco Engineering carries a full range of parts for all Feed Assemblies in stock. All parts made in South Africa in Our factory based in Rosslyn, Pretoria North to precise specifications using only the highest quality tool steel

Notes