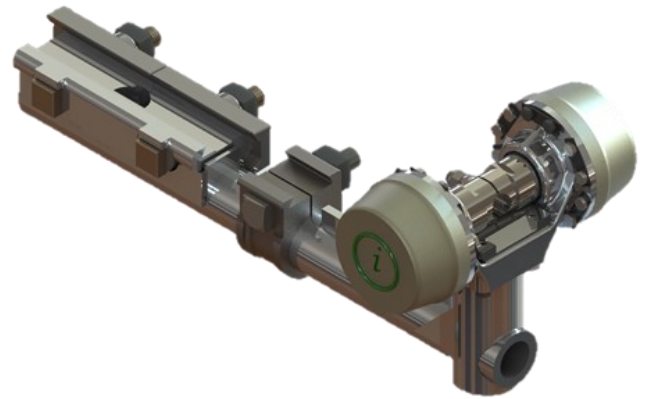




## Collaring Device Pneumatic



The collaring Device assists with accurate hole collaring with its robust design for long durability. The collaring device stabilises the Rod during drilling and ensures the bit does not get destabilised when drilling. It eliminates the back-breaking work of handling drill rods during operation. Designed to bring maximum benefits in a compact, mobile package. The Impco Centralizer has very few parts, positive centering and is low cost. The robust Collaring Device is less complicated, more durable and harder working.

### **Key Features**

- Centralizer controlled by one valve on the Remote Control
- Rapid opening and powerful closing of Clamping Jaws
- Rugged construction of seamless steel tube
- Impco Centralizers are designed to hold up to 46m 150 ft of 38mm (1½") round drill rods.

### **Lubrication**

Impco Centralizers are lubricated by air-misted oil delivered by the in-line lubricator. Always use quality rock drill oil or grease.

### **Builds**

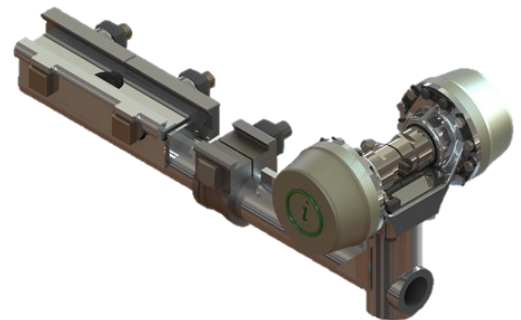
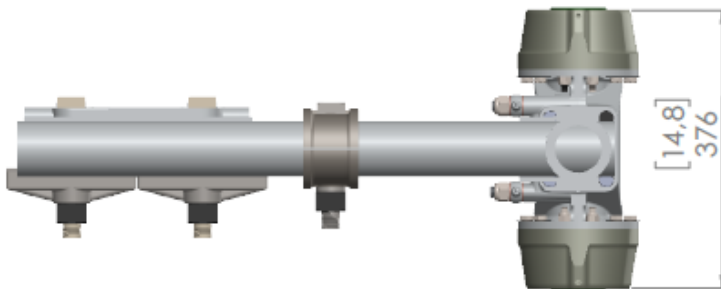
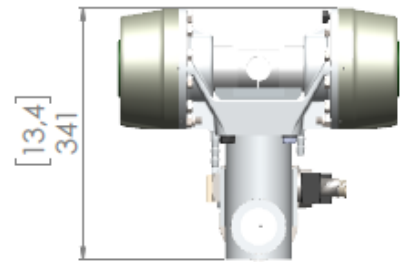
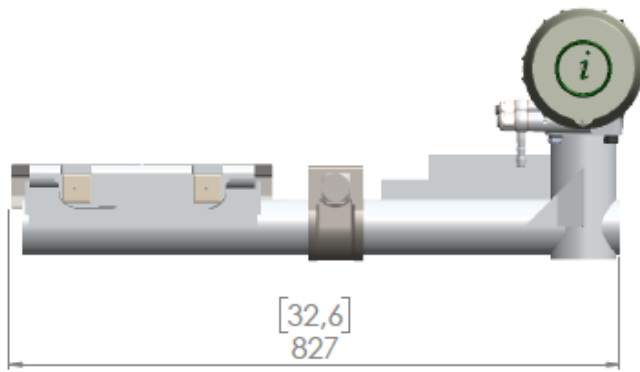
Clamping jaws available to fit 32mm (1¼") to 38mm (1½") drill steel

### **Technical Information**

	<b>Metric</b>	<b>Imperial</b>
Weight	86 Kg	187 lb
Length	827mm	32.6 Inch
Height	341 mm	13.4 Inch
Width	376 mm	14.8 Inch
Operating Pressure	101 psi	7 Bar
Extension	203 mm	8 inches
Gripping Force	3927 pound Force	17648 Newton
Hose Size	12.7mm	½ inch

### **Ordering Numbers**

- COL-D-P-32NJAW— (1¼") 32mm Piston
- COL-D-P-38NJAW— (1½") 38mm Piston



Single lever action at the Remote Panel controls lifting and lowering of rods. Jaws grip the rod or the coupling while rotation spins threaded rod to uncouple.

Impco Engineering carries a full range of parts for the Collaring Device in stock. All parts made in South Africa in our factory based in Rosslyn, Pretoria North to precise specifications using only the highest quality tool steel

### Notes

---

---

---

---

---

---

---

---

---

---