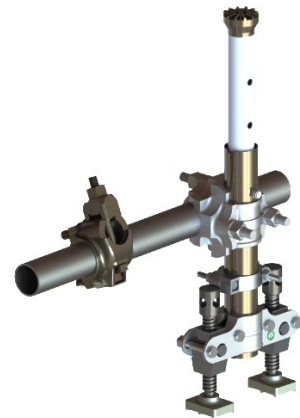




114mm(4½ Inch) Bar Gear



Contents

General view H Frame	Page 1
General view H frame	Page 2
114mm bar and arm assembly selection	Page 3
114mm H frame assembly selection	Page 4
114mm Pin And Bar assembly selection	Page 5
Telescopic Bar assembly selection	Page 8
Double Jack assembly and parts	Page 9
Cross Clamp assembly and parts	Page 10
Machine Clamp assembly and parts	Page 11
Safety Clamp assembly and parts	Page 12
Cross Bar selection	Page 12
H Fame and stub axel assembly	Page 13
Stub axel options and parts	Page 14



114mm(4½ Inch) Bar Gear Assembly Selection Catalogue

Introduction

In all pneumatic drifter drilling applications a rigid mounting is essential.

The 114mm (4 ½ inch) Bar gear assemblies shown in this catalogue provide the rigid mounting equipment for accurate and productive drilling operations. These assemblies are a kit of parts selected by the user to suit any particular drilling application.

Various types are shown, the simple bar and arm assembly, the H frame assembly and "stub axle" mountings.

Safety

In every assembly shown here safety clamps are specified. They are an important check to prevent accidents. In the event a cross clamp is loosened to make adjustments it is held in place by the safety clamp and doesn't fall down the length of the telescopic bar. See pages 6 and 7.

Drilling set up options

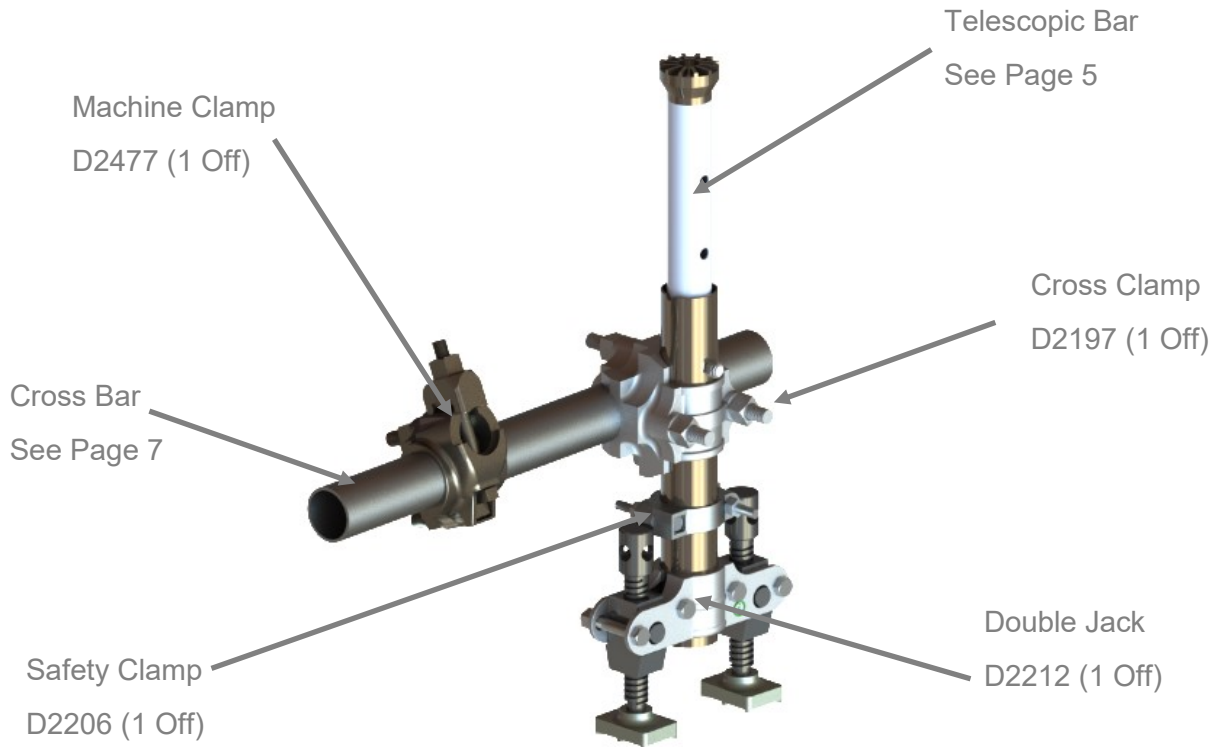
Where single long holes or sets of parallel holes are to be drilled the regular machine clamp (part number D2477) is specified. Alternatively where "round the clock," drilling, or fan hole drilling, where the axis of rotation and the axis of the drill must always be in line, a stub axle assembly is preferred. See pages 13 and 14.

Note

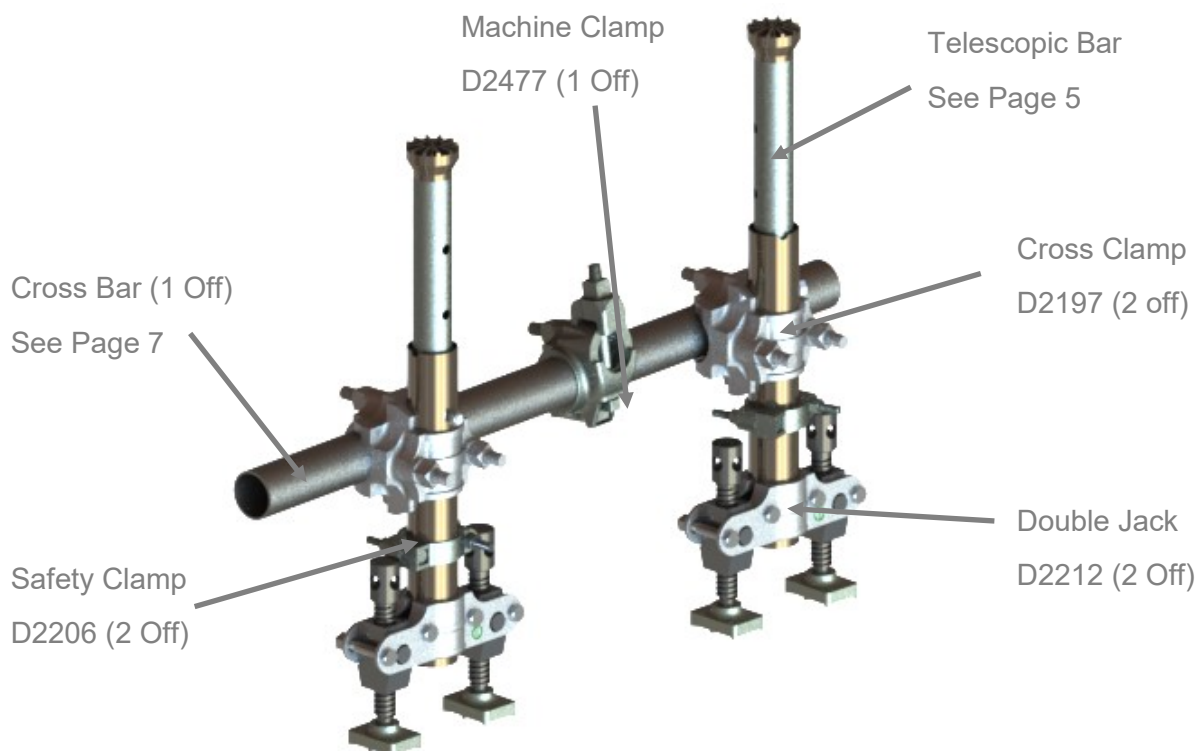
There is no single part number to cover any one particular bar gear assembly as every application is different. Consequently bar gear selection is a series of user specified options from a selection of common parts to build any assembly required to suit the drilling application.



114mm(4½ Inch) Bar and Arm Assembly



114mm(4½ Inch) H Frame Assembly Single



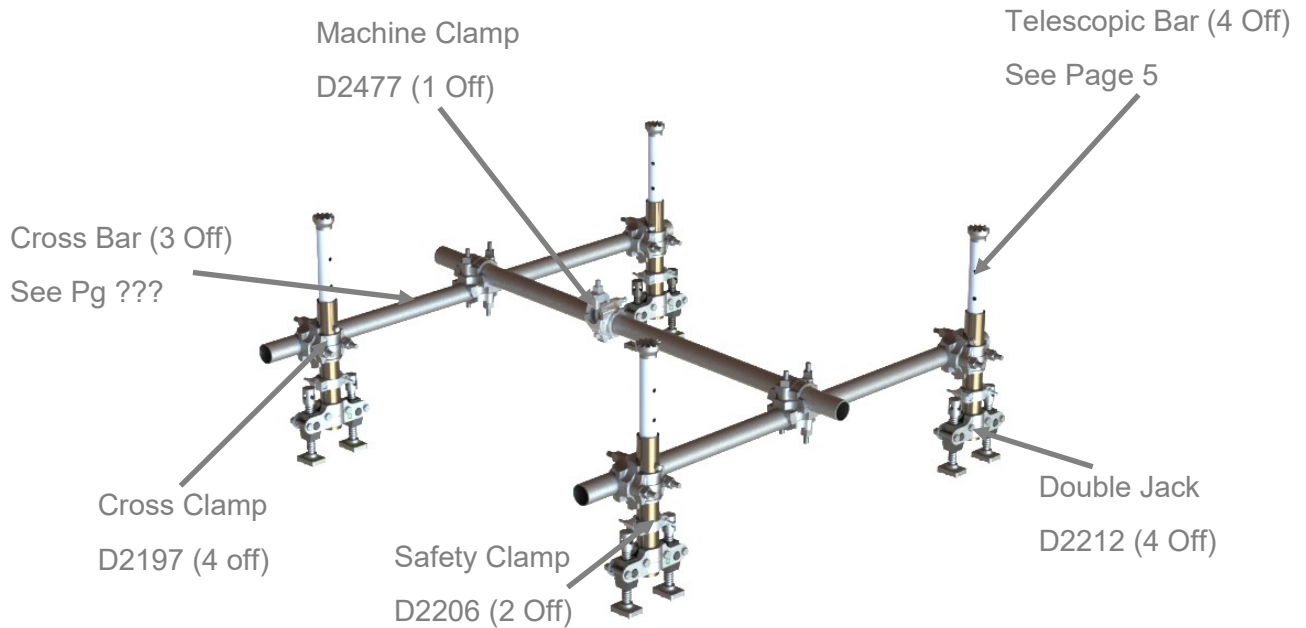
Note: this assemblies is not available as a single part. This assembly must be ordered as a set of component parts.

12 Piet Rautenbach Street, Rosslyn, Pretoria North , Gauteng, South Africa Tel: +27 (0) 12 541 0932 Fax: +27 (0) 12 541 5744
sales@impco.co.za Website: www.impco.co.za

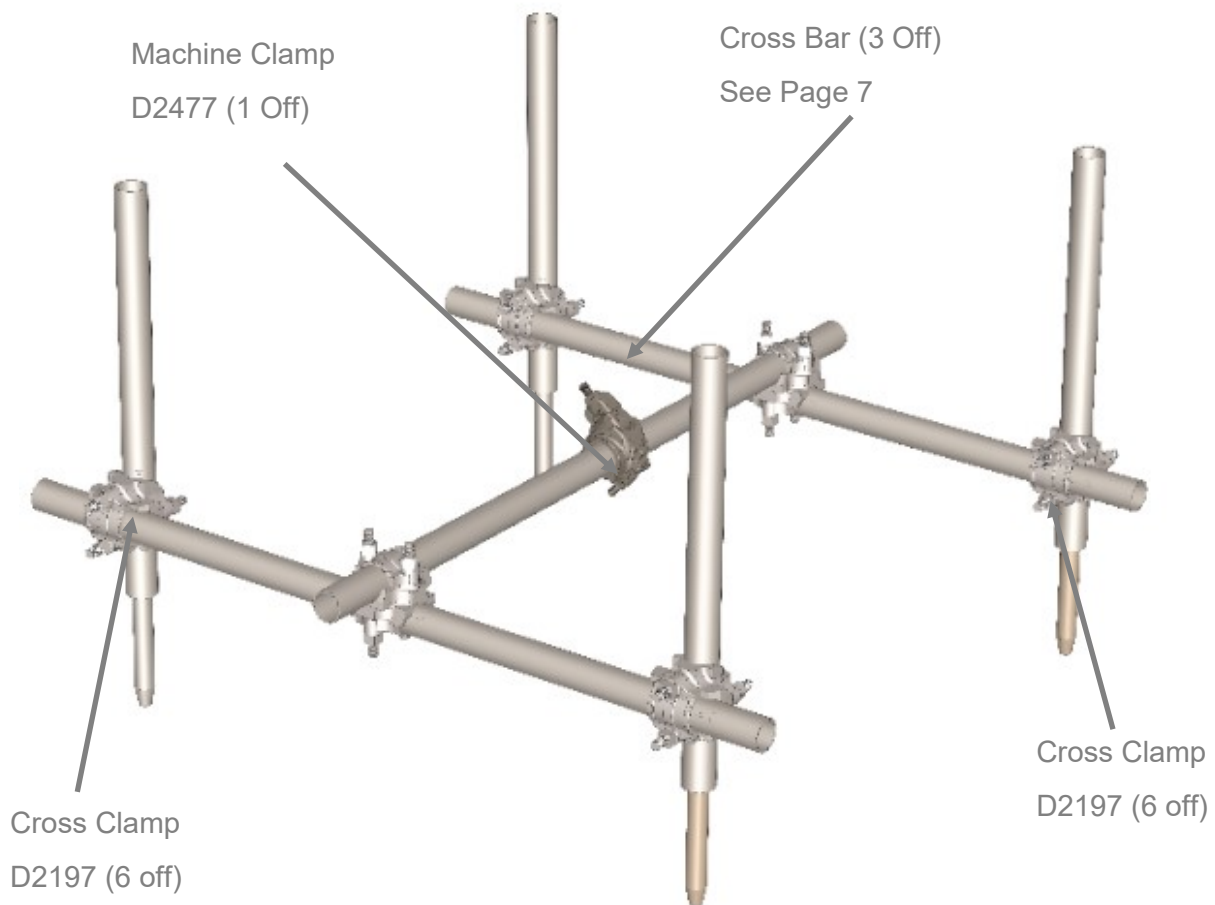
Impco Engineering strives to improve the products range and therefore reserve the right to modify materials, specifications, designs and exterior colours without prior notice. Technical data corresponds with the available information at the time of printing



114mm(4½ Inch) H Frame Assembly Double



114mm(4½ Inch) H Frame - Pin and Bar Assembly



Note: this assembly is not available as a single part. This assembly must be ordered as a set of component parts.



114mm(4½ Inch) Telescopic Bar Selection

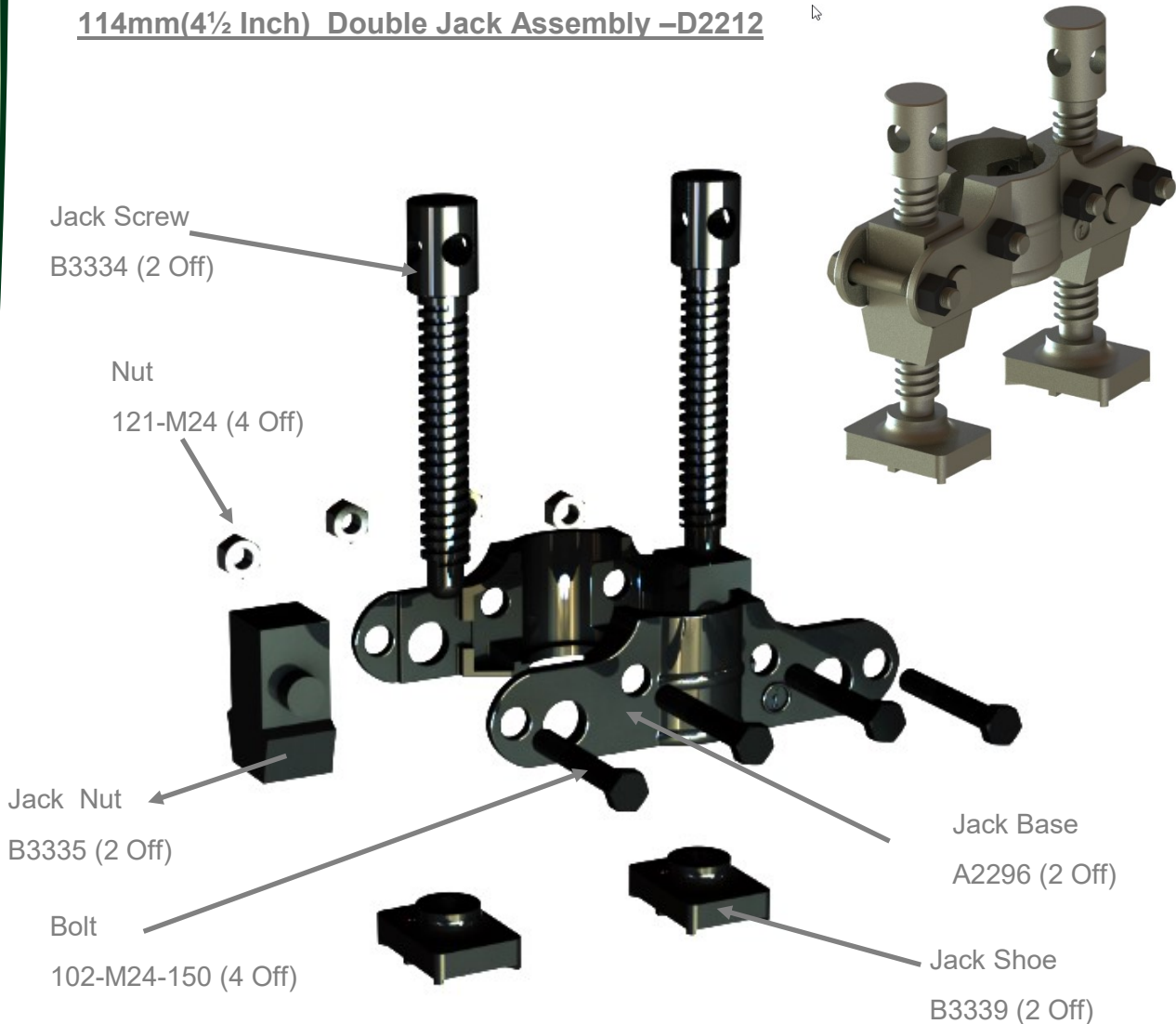


Eight different lengths available

Part Number	Closed Length	Extended Length
C3865-0,9 X 1,52 M	0,90 M	1,52 M
C3865-1,83 X 2,44M	1,83 M	2,44 M
C3865-1,83 X 3,05M	1,83 M	3,05 M
C3865-2,14 X 3,05M	2,14 M	3,05 M
C3865-2,29 X 3,05M	2,29 M	3,05 M
C3865-2,44 X 3,66M	2,44 M	3,66 M
C3865-3,05 X 4,27M	3,05 M	4,27 M
C3865-5,18 X 6,10M	5,18 M	6,10 M

Sub-components of the telescopic bar are not available separately

114mm(4½ Inch) Double Jack Assembly –D2212



Jack Screw
B3334 (2 Off)

Nut
121-M24 (4 Off)

Jack Nut
B3335 (2 Off)

Bolt
102-M24-150 (4 Off)

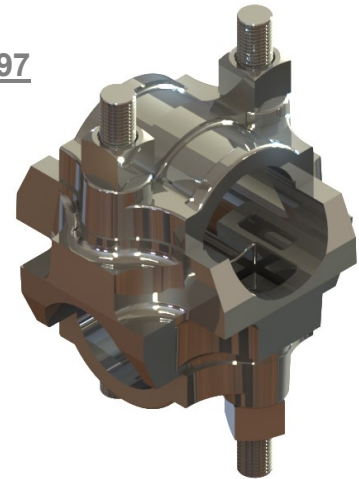
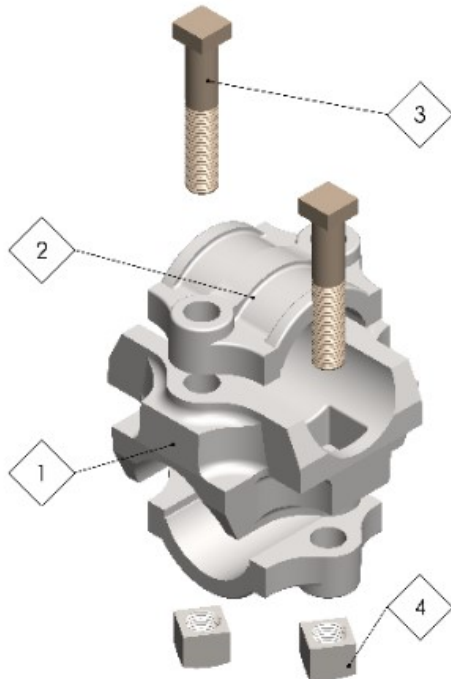
Jack Base
A2296 (2 Off)

Jack Shoe
B3339 (2 Off)

Component parts are available individually

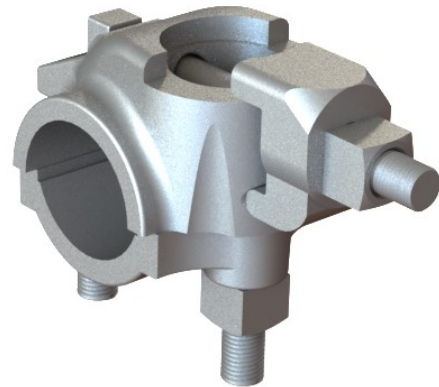
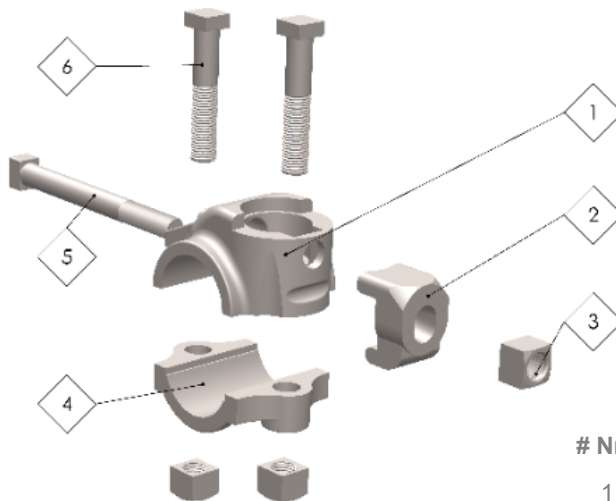


114mm(4½ Inch) Cross Clamp Assembly Part Nr: D2197



# Nr	Part Number	Description	Qty
1	A2290	Cross Clamp Body	1
2	A2285	Cap	2
3	C3837	Bolt	4
4	D2201	Nut	4

114mm(4½ Inch) Machine Clamp Assembly Part Nr: D2477



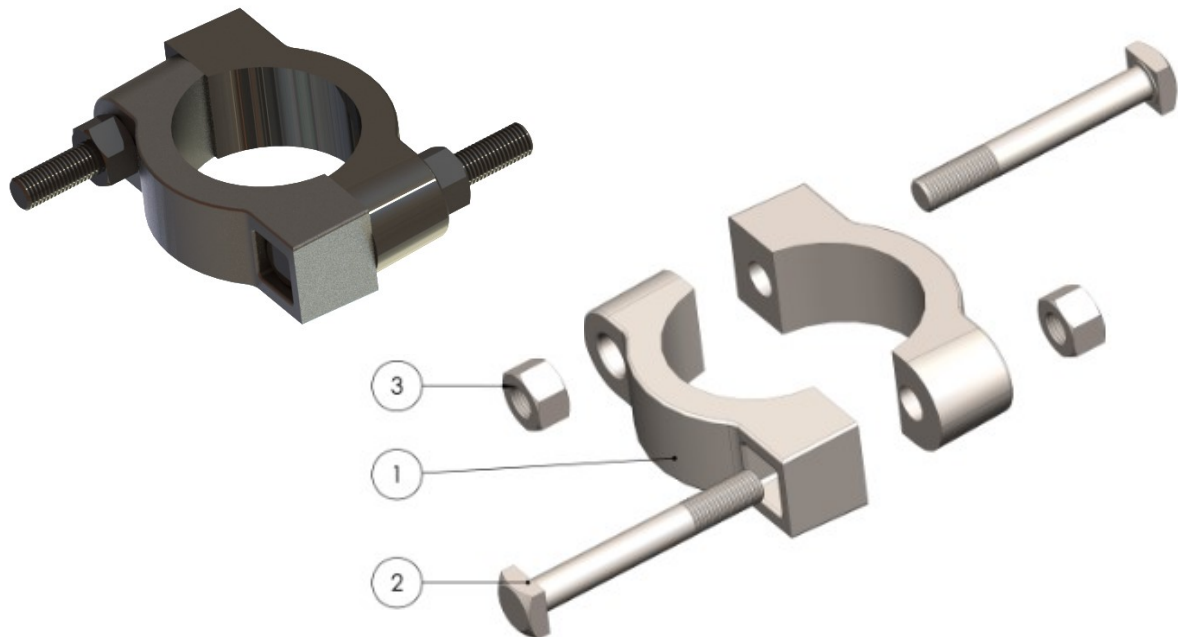
# Nr	Part Number	Description	Qty
1	A2284	Machine Clamp Body	1
2	B3340	Toe	1
3	D2201	Nut	3
4	A2285	Cap	1
5	C3838	Bolt	1
6	C3837	Bolt	2

Component parts are available individually



114mm(4½ Inch) Safety Clamp Assembly

Part Nr:D2206



# Nr	Part Number	Description	Qty
1	B3329	Cap	2
2	D2205	Bolt	2
3	121-12W	Nut	4

114mm(4½ Inch) Cross Bars are available in four lengths as shown



Part Number

C3832—114 X 1,22M
C3832—114 X 1,83M
C3832—114 X 2,74M
C3832—114 X 3,05

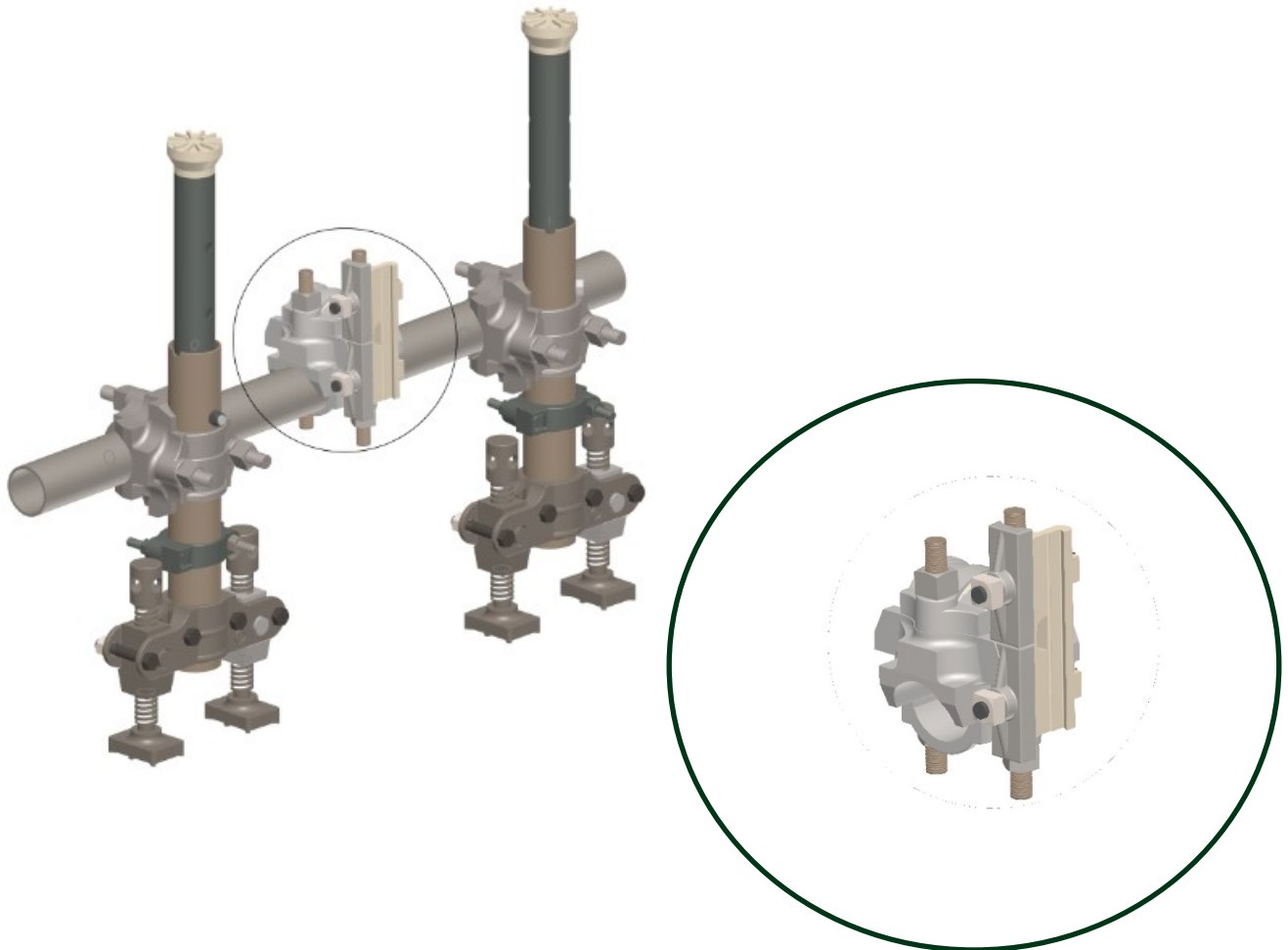
Description

Cross Bar 1,22m Long
Cross Bar 1,83m Long
Cross Bar 2,74m Long
Cross Bar 3,05m Long

Component parts are available individually



114mm(4½ Inch) Stub Axle Assembly

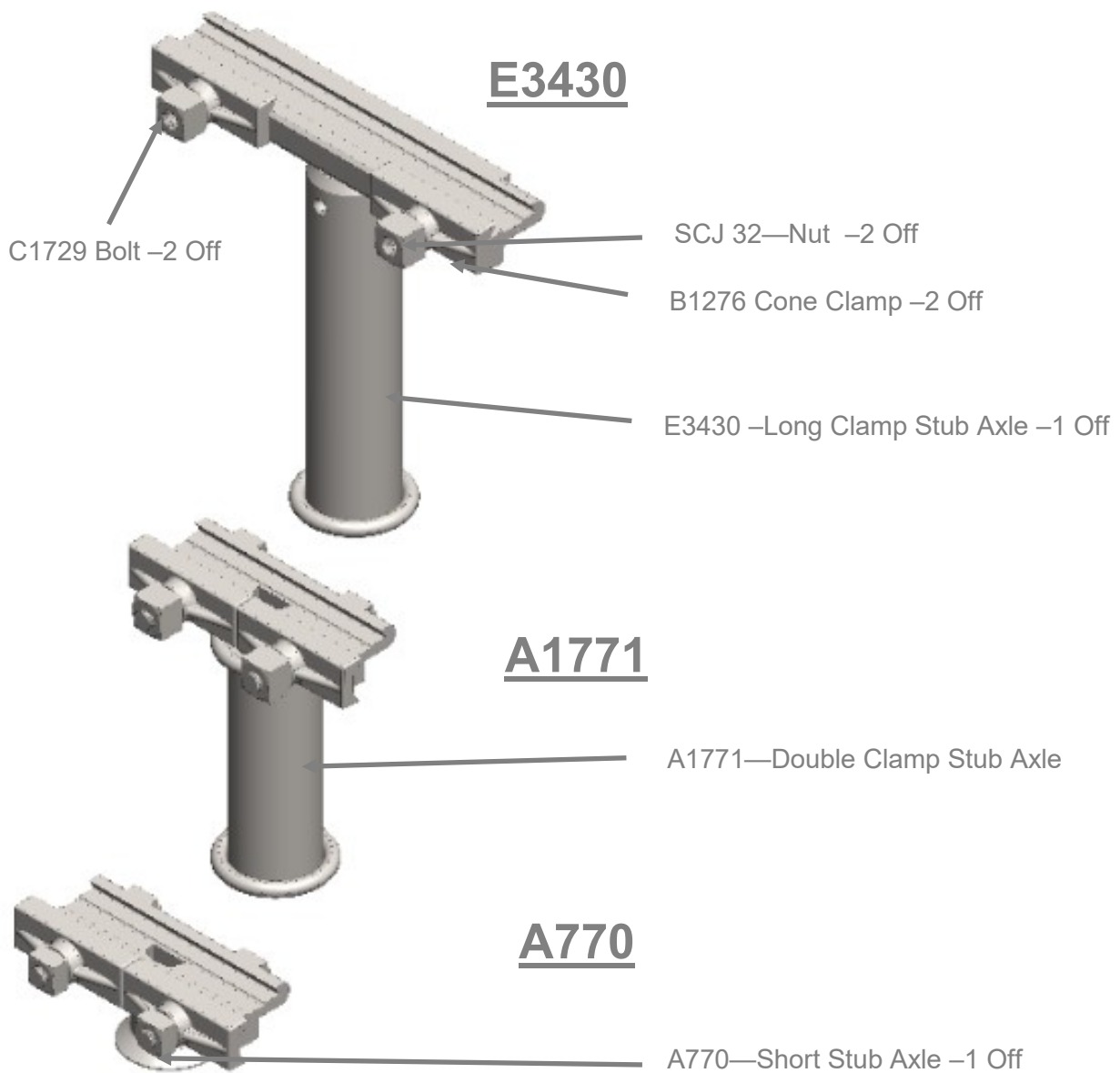


Close up detail of the short clamp stub axle locked in a cross clamp which is mounted on the horizontal bar of an H frame assembly. The stub axle can be easily rotated and set at any angle for accurate fan hole drilling where the axis of rotation has to be in line with the axis of the drifter. See page 9 for further details.

Component parts are available individually



114mm(4½ Inch) Stub Axle Selection



The long clamp stub axle is used in conjunction with the S36IR (independent rotation) drifter mounted on the Mk5 tandem motor screw feed shell and the short clamp stub axle is used in conjunction with the S36RB (Rifle bar rotation) drifter mounted on a Mk5 single motor feed shell.

Note: In the arrangements shown here the parts are only available individually and not as ready made sub-assemblies.