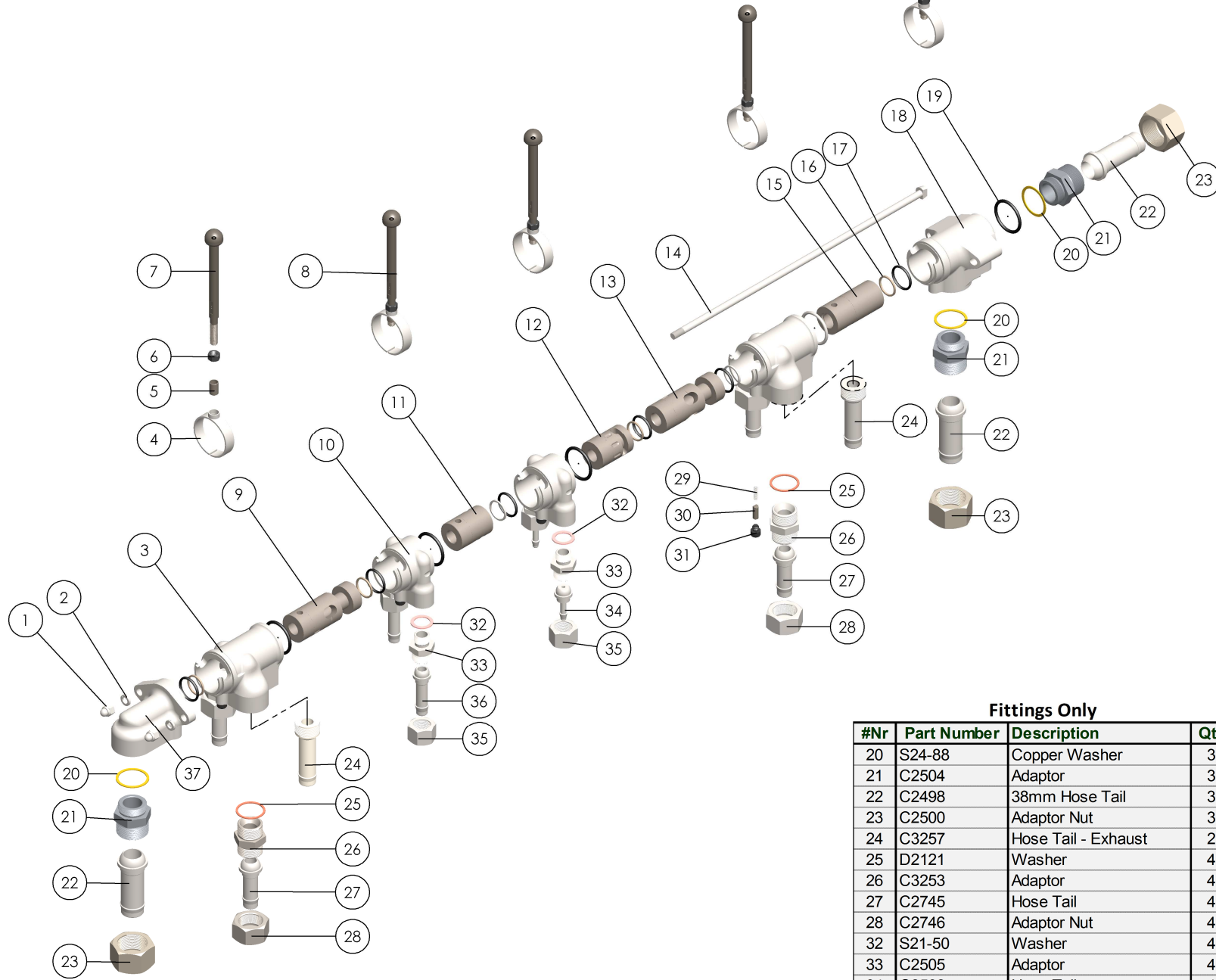


Remote Control 5 Lever - (Double Gearbox)

Part Nr:RCP-IR-5U-Tanmo

12 Piet Rautenbach str
Rosslyn, Pretoria North
South Africa
Tel: +27(0) 12 541 0932
Fax: +27(0) 12 541 5744
sales@impco.co.za
www.impco.co.za



#Nr	Part Number	Description	Qty
1	127-M12	Dome Nut	2
2	143-M12	Washer	2
3	A1840	Rotation Valve Housing	2
4	C2507	Dust Ring	5
5	D1861	Ferrule	5
6	D1832	Nut	5
7	C2506L	Lever	5
8	C2506 Assy	Consist of 4,5,6 and 7	6
9	B2644	S36 Motor Valve	1
10	B1949	Valve Housing	2
11	B1896	Air Blast Valve	1
12	B1897	Valve	1
13	B2657	Feed Motor Valve	1
14	C3255M	Through Bolt	2
15	B1891	Machine Valve	1
16	D1831	Valve Seating Ring	6
17	164-0514	O Ring	6
18	A1241	Valve Housing	1
19	164-0026	O Ring	5
20	S24-88	Copper Washer	3
21	C2504	Adaptor	3
22	C2498	38mm Hose Tail	3
23	C2500	Adaptor Nut	3
24	C3257	Hose Tail - Exhaust	2
25	D2121	Washer	4
26	C3253	Adaptor	4
27	C2745	Hose Tail	4
28	C2746	Adaptor Nut	4
29	S30-30	Throttle Spring	5
30	D1830	Valve Plunger	5
31	D1829	Plunger Plug	5
32	S21-50	Washer	4
33	C2505	Adaptor	4
34	C2502	Hose Tail	4
35	C2503	Adaptor Nut	4
36	C2501	Hose Tail	2
37	A1849	Air Inlet Housing	1

Fittings Only

#Nr	Part Number	Description	Qty
20	S24-88	Copper Washer	3
21	C2504	Adaptor	3
22	C2498	38mm Hose Tail	3
23	C2500	Adaptor Nut	3
24	C3257	Hose Tail - Exhaust	2
25	D2121	Washer	4
26	C3253	Adaptor	4
27	C2745	Hose Tail	4
28	C2746	Adaptor Nut	4
29	S30-30	Throttle Spring	5
30	D1830	Valve Plunger	5
31	D1829	Plunger Plug	5
32	S21-50	Washer	4
33	C2505	Adaptor	4
34	C2502	Hose Tail	4
35	C2503	Adaptor Nut	4
36	C2501	Hose Tail	2
37	A1849	Air Inlet Housing	1

Last Revision Date: 12 August 2019